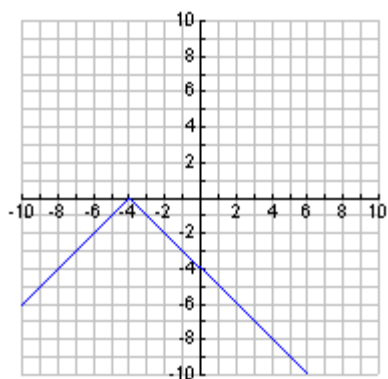
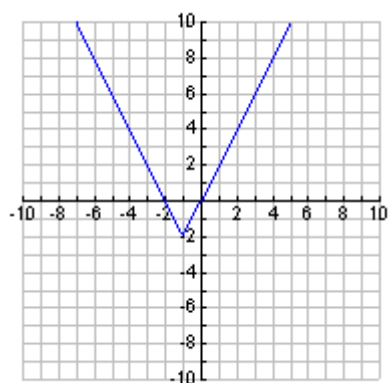


Write the equation of each absolute value graph.

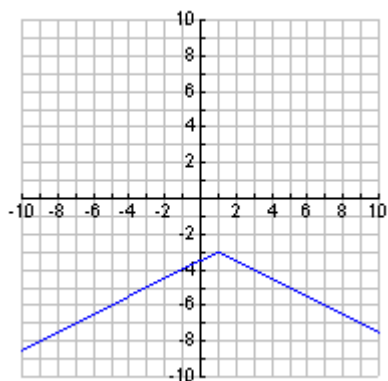
1



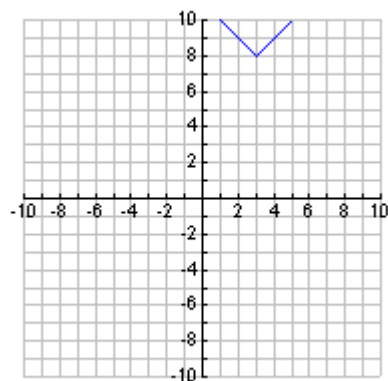
2



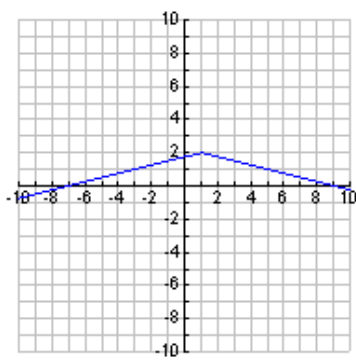
2



4.

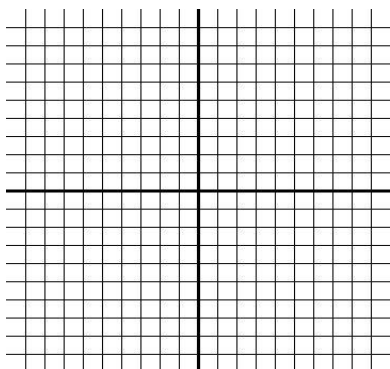


5

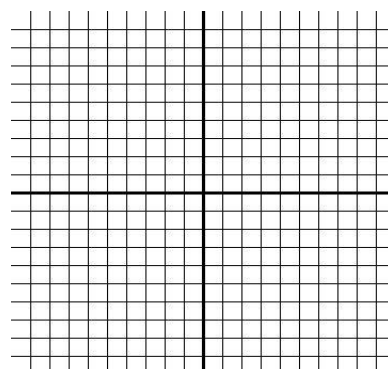


Sketch each graph with the vertex and at least 4 other points. Describe the transformation(s) of the parent graph $f(x) = |x|$.

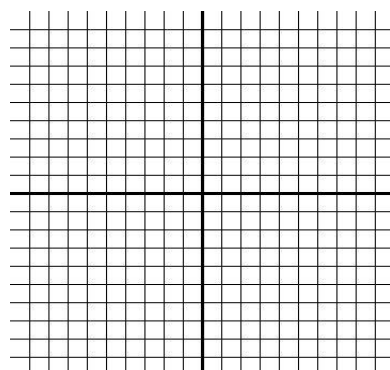
6. $f(x) = -2|x|$



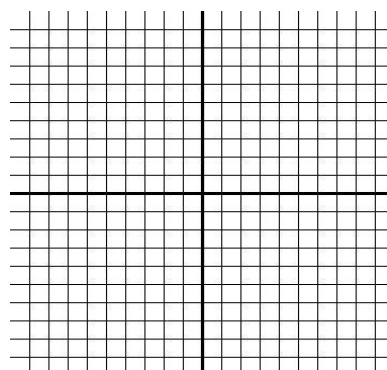
7. $f(x) = |x-4| - 5$



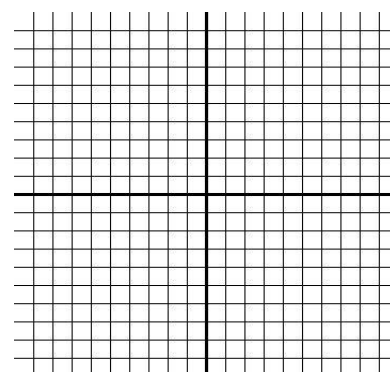
8. $f(x) = -\frac{1}{3}|x-2| + 1$



9. $f(x) = 2|x+1| + 1$



10. $f(x) = -3|x+5| + 2$



11. $f(x) = |x+3| - 7$

